

REFIT TAPE

TECHNICAL DATA SHEET 2207

V3.12/21

PRODUCT DESCRIPTION

Refit Tape is a permanent carrier-free transfer adhesive with an instant aggressive bond even on difficult to-stick surfaces. Offering good humidity resistance and a wide application temperature, the acrylic-based adhesive tape also performs exceptionally well when exposed to weathering and UV exposure. Refit Tape provides a more consistent application when compared to liquid glues/adhesives and at 0.05mm thick, with no foam carrier provides a better surface to surface bond without a noticeable gap between the surfaces.

SHELF LIFE

One year from date of receipt by customer when stored at 22°C ±5°C (72°F ±10°F) and 60% relative humidity.

PHYSICAL PROPERTIES

Values shown are typical values and not to be used for specification purposes.

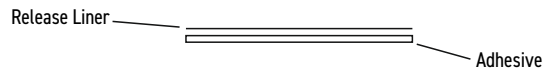
Carrier	None
Release-Liner	Siliconised Glassine
Adhesive	Acrylic-based
Colour	Colourless (Translucent)
Thickness	Adhesive 50µm / 0.05mm (±10%) / Release Liner 70µm / 0.07mm (±10%)
Width	12mm, 25mm (±5%). Other widths available on request.
Length	10m (±0.1). Other lengths available on request.

PERFORMANCE PROPERTIES

Values shown are typical values and not to be used for specification purposes.

Temperature Resistance	-20°C to +120°C / -4°F to 250°F
Application Temperature	5°C to 38°C / 41°F to 100°F

PRODUCT CONSTRUCTION



Tel: +44 (0)1625 618185 | www.jtape.com | info@jtape.com

Designed & Manufactured in the UK: Hulley Road, Macclesfield, Cheshire, SK10 2SF.

#TAPESMART

Important Notice to Purchaser: JTAPE MAKES NO WARRANTIES, EXPRESS OR IMPLIED, INCLUDING, BUT NOT LIMITED TO, ANY IMPLIED WARRANTY OF MERCHANTABILITY OR FITNESS FOR A PARTICULAR PURPOSE. User is responsible for determining whether the JTAPE product is fit for a particular purpose and suitable for user's application. Please remember that many factors can affect the use and performance of a JTAPE Automotive product in a particular application. The materials to be bonded to the product, the conditions in which the product is used, and the time and environmental conditions, in which the product is expected to perform are among the many factors that can affect the use and performance of a JTAPE Automotive product, some of which are uniquely within the user's knowledge and control. It is essential that the user evaluate the JTAPE Automotive product to determine whether it is fit for a particular purpose and suitable for user's methods of application. Limitation of Remedies and Liability: If the JTAPE product is proved to be defective, THE EXCLUSIVE REMEDY, AT JTAPE'S OPTION, SHALL BE TO REFUND THE PURCHASE PRICE OF OR TO REPAIR OR REPLACE THE DEFECTIVE JTAPE PRODUCT. JTAPE shall not otherwise be liable for loss or damages, whether direct, indirect special, incidental, or consequential, regardless of the legal theory asserted, including negligence, warranty, or strict liability.