

J TAPETM

#TAPESMART

**PRODUCT
BROCHURE**

www.jtape.com

#TAPESMART

INNOVATIVE BEST SELLERS

Primeshield	03
Prime And Paint Foam Masking Tape	03
Advanced Foam Masking Tape	04
Smooth Edge Foam Masking Tape	04
No Edge Blending Tape	05
Flexi No Edge Blending Tape	05
Duo Masking Tape	06
Perforated Trim Masking Tape	06

FINE LINE MASKING TAPES

Purple Translucent Fine Line Masking Tape	07
Olive+ Fine Line Masking Tape	07
Blue Fine Line Masking Tape	08
Green Fine Line Masking Tape	08
Orange Fine Line Masking Tape	09
120°C Lime Precision Masking Tape	10
130°C Flat Orange Fine Line Precision Masking Tape	10
160°C High Temperature Fine Line Crepe Masking Tape	11
Customising Tape	12
Striping Tape	12

PAPER MASKING TAPES

80°C Premium Masking Tape	13
110°C High Performance Masking Tape	13
120°C Lime Precision Masking Tape	13
130°C Flat Orange Precision Masking Tape	14
160°C High Temperature Crepe Masking Tape	14
Paint Control Tape	14

PROTECTION FILMS

Wheel Repair Mask	15
Breathable Masking Film	15
Premium Clear Masking Film	15
Pre-Folded Clear Masking Film	16
Non-Slip Surface Protection Film	16
Seal Wrap	16

PROTECTION TAPES

Premium Cloth Protection Tapes	17
General Purpose Cloth Protection Tape	17
Aluminium Tape	17
220°C Green High Temperature Polyester Film Tape	18
220°C Blue High Temperature Polyester Film Tape	18
High Temperature Crepe Masking Discs	19
Green High Temperature Polyester Film Discs	19
Parking Sensor Masking Discs	20

DOUBLE SIDED & MOUNTING TAPES

Clear Logo Tape	21
Grey Double Sided Acrylic Tape	21
High Strength Acrylic Tape	21
Double Sided Mounting Tape	22
Refit Tape	22
Number Plate Pads	22

OEM REPLACEMENT PRODUCTS

Seam Sealing Tape	23
Door Skin Replacement Foam	23
Door Skin Replacement Film	23

ADDITIONAL PRODUCTS

Cloth Hazard Tape	24
Floor Marking Tape	24
Braided Windscreen Removal Wire	24

PRODUCT BUNDLE KITS

Grande Kit	25
Essentials Kit	25
Beanie Bundle Kit	25
Polo Bundle Kit	25



PRIMESHIELD

[Primeshield](#) is the smart solution for masking any gaps that require priming and in particular high-build priming. Applied in seconds, it prevents overspray getting inside a vehicle and provides a soft, feathered finish. Primeshield is estimated to be up to 20 times faster to prepare for spraying.

Part No.	Metric	Imperial
1015.1535	15mm x 35m	5/8" x 114'
1015.2225	22mm x 25m	7/8" x 81'

FEATURES & BENEFITS

✓ Fast and efficient aperture masking	Dramatically reduces process time
✓ Seals and protects inside of vehicle	No unwanted primer overspray
✓ Precise fingertip adjustment	Even application of primer
✓ No primer build-up on panel edges	Leaves a feathered finish



Scan this QR code to learn more about this product on our website

HOW TO

STEP 1

Apply the tape in the gap smaller side first. Locate the tape in the gap so that it sits in the central groove.



STEP 2

Push Primeshield further into the gap if required, to allow the primer to cover bare metal and filler areas ensuring seal is maintained.



STEP 3

Prime the desired areas and remove prior to colour application while the primer is soft.



PRIME AND PAINT FOAM MASKING TAPE

[Prime & Paint Foam Masking Tape](#) is the perfect solution for light priming, colour application and clear coat finish. It supports a three-stage spraying process with only one masking application. Prime & Paint Foam Masking Tape is the unique combination of two innovative products: Primeshield and Advanced Foam Masking Tape, giving the body-shop considerable time and material savings.

Part No.	Metric	Imperial
1016.3530	35mm x 30m	1 1/2" x 99'

FEATURES & BENEFITS

✓ Unique patented 2 in 1 masking product	No need to de-mask and re-mask between priming/painting
✓ Hidden adhesive	Prevents hard primer/ground coat edges
✓ Detachable Primeshield piece	One step process
✓ Paint absorbent	Helps to create a soft finish



Scan this QR code to learn more about this product on our website

HOW TO

STEP 1

Apply product to the moving part where possible ensuring that the adhesive is hidden.

STEP 2

Leave the adhesive free portion extended from the edge. Close the aperture and adjust the foam into the required position.

STEP 3

For the A-Post application, apply the foam to the back of the wing/fender ensuring the adhesive is hidden. Close the door and adjust the foam into position.



Scan this QR code to learn more about this product on our website

ADVANCED FOAM MASKING TAPE

[Advanced Foam Masking Tape](#) is an innovative alternative to standard, round, smooth-edge foam masking tapes. This tape is designed to mask all apertures to prevent the ingress of paint during spraying, providing a high-quality finish while saving time and money.

Part No.	Metric	Imperial
1011.2050	20mm x 50m	¾" x 165'

FEATURES & BENEFITS

✓ One continuous length	No waste unlike competitive products that can accidentally remove multiple lengths
✓ For use in all apertures including the A-Post	Suitable for all panel gaps
✓ Adjustable between coats	Helps create a softer edge
✓ Temperature resistant 90°C/194°F	Suitable for low bake ovens
✓ Offset adhesive	Prevents hard paint edges
✓ Retains its shape to re-join	Perfect product positioning every time
✓ Can be used on the moving part	Allows product to be adjusted between coats

HOW TO

STEP 1

Remove the product from the box and apply along the aperture, ensuring not to stretch the product, then apply pressure to the foam and close the moving part.



STEP 2

With your fingertips adjust the foam, pushing it back into the gap.



STEP 3

Paint the vehicle and stretch to remove, leaving no residue.



Scan this QR code to learn more about this product on our website

SMOOTH EDGE FOAM MASKING TAPE

[Smooth Edge Foam Masking Tape](#) is ideal for use in door apertures, bonnet or boot lid openings and other vehicle apertures. It is perfect for the sealing part of a painting operation and saves you time with no unwanted tape lines.

Part No.	Metric	Imperial
1013.1350	13mm x 50m	½" x 165'
1013.1935	19mm x 35m	¾" x 114'

FEATURES & BENEFITS

✓ Fixes to the door, bonnet/hood, boot/trunk apertures	A fast efficient way to fill a gap
✓ Paint absorbent	Helps to create a soft finish
✓ Temperature resistant to 90°C/194°F	Suitable for low bake ovens
✓ 2 convenient sizes	For use on standard and commercial vehicles

HOW TO

STEP 1

Remove from dispensing box working your way from one side to another.

STEP 2

Apply along the aperture ensuring not to stretch the product, then close the door.

STEP 3

Paint the vehicle and stretch to remove, leaving no residue.



NO EDGE BLENDING TAPE

Non-stretch, [No Edge Blending Tape](#) is the smart solution for masking swage lines and panel edges to create a seamless finish from new paintwork to old.



Scan this QR code to learn more about this product on our website

Part No.	Metric	Imperial
1012.2005	20mm x 5m	3/4" x 16'
1012.2025	20mm x 25m	3/4" x 81'

FEATURES & BENEFITS

✓ Feathered edge over long lengths	Consistent finish
✓ Seamless blending from old to new paintwork	Eliminates rework
✓ Temperature resistant to 160°C/320°F	Suitable for low bake ovens and infra-red drying systems
✓ Non-stretch	No unwanted elongation

HOW TO

STEP 1

Remove the liner from the required length of No Edge Blending Tape.



STEP 2

Apply the tape along the swage line.



STEP 3

For best results, remove straight after the last clear coat has been applied, when wet.



FLEXI NO EDGE BLENDING TAPE

[Flexi No Edge Blending Tape](#) is the innovative and unique solution for masking curved swage lines and curved panel edges. It makes masking around corners a speedy process even on the tightest of turns. It is the most effective solution for masking filler cap inserts and always gives a feathered paint edge, eliminating rework.



Scan this QR code to learn more about this product on our website

Part No.	Metric	Imperial
1018.1525	15mm x 25m	5/8" x 81'

FEATURES & BENEFITS

✓ Conforms around difficult areas without kinking	Suitable for blending where flexibility of the product is key
✓ Seamless blending from old to new paintwork	Eliminates rework
✓ Paint absorbent foam	No hard paint edges
✓ Temperature resistant to 90°C/194°F	Suitable for low bake ovens
✓ One size for every application	Ideal for any body repair scenario
✓ Gives feathered paint edge	No primer build-up

HOW TO

STEP 1

Remove product starting from the top row in the box.



STEP 2

Choose required contour to blend to and apply directly to vehicle ensuring tape is not stretched.



STEP 3

For best results, remove straight after the last clear coat has been applied, when wet. Stretch the tape when de-masking to ensure clean removal.



DUO MASKING TAPE

[Duo Masking Tape](#) is highly versatile and can be used to mask a wide variety of applications around the vehicle. Made from high quality materials, there is adhesive on both sides and a rigid edge allows the masking of individual panels. Its primary application is to mask rubber seals along the top of the doors, creating a void when spraying cant rails and roof pillars with no adhesive exposure.



Scan this QR code to learn more about this product on our website

Part No.	Metric	Imperial
1150.7520	75mm x 20m	3" x 66'

FEATURES & BENEFITS

✓ Creates a void when spraying cant rails/roof pillars	Eliminates need to mask door rubbers down
✓ 2:1 application around other panels, doors, bonnet/hood, boot/trunk, wing/fender	Easy application
✓ Perforated sections for easy tear	No need for scissors or knives
✓ Seals and protects inside of vehicle	Prevents overspray
✓ Easy lifting tab	Easy removal

HOW TO

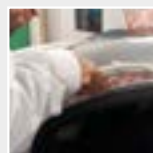
STEP 1

Remove the liner from the narrow section of tape and stick it to the underside of the roof rail and repeat.



STEP 2

Apply pressure to the tape and then close the door.



STEP 3

Remove the film liner from the wide section of tape, pull down and mask off the rubber seal.



Scan this QR code to learn more about this product on our website

PERFORATED TRIM MASKING TAPE

[Perforated Trim Masking Tape](#) is a universal lifting tape which fits all parts of the car. Its paper construction allows it to absorb paint unlike the film versions. It's the quick, clean way to mask rubber and trims, ensuring a perfect finish every time.

Part No.	Metric	Imperial
1055.5010	50mm x 10m	2" x 33'

FEATURES & BENEFITS

✓ Fits all parts of the car unlike competitive products	No need for different types of lifting products
✓ Perforated sections allow for easy tearing	No need for scissors or knives
✓ Easily fits around corners	Easy application even in difficult areas
✓ Temperature resistant to 160°C/320°F	Suitable for high bake ovens

HOW TO

STEP 1

Tear perforations to desired size and use the plastic edge to slide behind rubber trim.



STEP 2

Pull rubber down with the plastic trim and overlay sections to go round tight corners.



STEP 3

Add pressure to secure.





PURPLE TRANSLUCENT FINE LINE MASKING TAPE

Purple Translucent Fine Line Tape features a newly formulated translucent backing which makes it ideal for seeing through to the painted surface. It offers increased grab over other fine line tapes reducing the chance of lifting from difficult to mask substrates and allowing it to adhere to a wide variety of surfaces. Purple Translucent Fine Line Tape is heat-resistant to temperatures up to 150°C/302°F for 1 hour and, after painting, it can be cleanly removed leaving a defined line with no adhesive residue.

Other sizes available upon request.

Part No.	Metric	Imperial
1113.0155	1mm x 55m	1/25" x 180'
1113.01.555	1.5mm x 55m	1/16" x 180'
1113.0255	2mm x 55m	2/25" x 180'
1113.0355	3mm x 55m	1/8" x 180'
1113.0655	6mm x 55m	1/4" x 180'
1113.0955	9mm x 55m	3/8" x 180'
1113.1255	12mm x 55m	1/2" x 180'
1113.1955	19mm x 55m	3/4" x 180'
1113.2555	25mm x 55m	1" x 180'



Scan this QR code to learn more about this product on our website



OLIVE+ FINE LINE MASKING TAPE

Olive+ Fine Line Masking Tape features a newly formulated semi-translucent backing which makes it ideal for seeing through to the surface below. Offering an increased grab over other fine line tapes, Olive+ Fine Line Masking Tape reduces the chance of lifting from difficult to mask substrates and allows the tape to adhere to a wide variety of surfaces. It is heat-resistant to temperatures up to 150°C/302°F for 1 hour and, after painting, it can be easily removed leaving a sharp clean line with no residue.

Other sizes available upon request.

Part No.	Metric	Imperial
1112.0155	1mm x 55m	1/25" x 180'
1112.01.555	1.5mm x 55m	1/16" x 180'
1112.0255	2mm x 55m	2/25" x 180'
1112.0355	3mm x 55m	1/8" x 180'
1112.0655	6mm x 55m	1/4" x 180'
1112.0955	9mm x 55m	3/8" x 180'
1112.1255	12mm x 55m	1/2" x 180'
1112.1955	19mm x 55m	3/4" x 180'
1112.2555	25mm x 55m	1" x 180'



Scan this QR code to learn more about this product on our website



BLUE FINE LINE MASKING TAPE

[Blue Fine Line Masking Tape](#) is a medium flex tape for creating intricate curves or straight lines. After painting, it can be cleanly removed leaving a defined line with no adhesive residue. Temperature resistant up to 150°C/302°F for at least 45 minutes.

Available in 33m and 55m rolls, other sizes available upon request.

Part No.	Metric	Imperial
1110.0133	1mm x 33m	1/25" x 108'
1110.01.533	1.5mm x 33m	1/16" x 108'
1110.0233	2mm x 33m	2/25" x 108'
1110.0333	3mm x 33m	1/8" x 108'
1110.0633	6mm x 33m	1/4" x 108'
1110.0933	9mm x 33m	3/8" x 108'
1110.1233	12mm x 33m	1/2" x 108'
1110.1533	15mm x 33m	5/8" x 108'
1110.1933	19mm x 33m	3/4" x 108'
1110.2533	25mm x 33m	1" x 108'



Scan this QR code to learn more about this product on our website



GREEN FINE LINE MASKING TAPE

[Green Fine Line Masking Tape](#) is perfect for intricate masking on multi-coloured paint jobs. It is very flexible making it easy to curve on flat surfaces and shapes with tight contours. Temperature resistant up to 150°C/302°F for at least 45 minutes.

Other sizes available upon request.

Part No.	Metric	Imperial
1105.0155	1mm x 55m	1/25" x 180'
1105.01.555	1.5mm x 55m	1/16" x 180'
1105.0255	2mm x 55m	2/25" x 180'
1105.0355	3mm x 55m	1/8" x 180'
1105.0655	6mm x 55m	1/4" x 180'
1105.0955	9mm x 55m	3/8" x 180'
1105.1255	12mm x 55m	1/2" x 180'
1105.1555	15mm x 55m	5/8" x 180'
1105.1955	19mm x 55m	3/4" x 180'
1105.2555	25mm x 55m	1" x 180'



Scan this QR code to learn more about this product on our website



ORANGE FINE LINE MASKING TAPE

[Orange Fine Line Masking Tape](#) is thinner and more translucent than other fine line masking tapes making it ideal for seeing through to the painted surface. It is perfect for straight lines while also being highly flexible. Temperature resistant up to 150° C/302°F for at least 45 minutes.

Available in 33m and 55m rolls, other sizes available upon request.

Part No.	Metric	Imperial
1111.0155	1mm x 55m	1/25" x 180'
1111.01.555	1.5mm x 55m	1/16" x 180'
1111.0255	2mm x 55m	2/25" x 180'
1111.0355	3mm x 55m	1/8" x 180'
1111.0655	6mm x 55m	1/4" x 180'
1111.0955	9mm x 55m	3/8" x 180'
1111.1255	12mm x 55m	1/2" x 180'
1111.1555	15mm x 55m	5/8" x 180'
1111.1955	19mm x 55m	3/4" x 180'
1111.2555	25mm x 55m	1" x 180'



Scan this QR code
to learn more about this
product on our website



Scan this QR code to learn more about this product on our website

120°C LIME PRECISION MASKING TAPE

120°C Lime Precision Masking Tape is a high tack masking tape for interior and exterior applications. It's a translucent rice paper masking tape, with an acrylic adhesive for highly protective bonds on sensitive surfaces. Ideal for both solvent-based and water-based paint systems it can be used for masking on painted surfaces, glass, plastics, mouldings, trims, rubbers and wheels and can be removed with no adhesive residue.

120°C Lime Precision Masking Tape is heat-resistant to temperatures up to 120°C/248°F for up to 1 hour and can be exposed outside to UV for up to 7 days.

Part No.	Metric	Imperial
1123.0150	1mm x 50m	1/25" x 165'
1123.01.550	1.5mm x 50m	1/16" x 165'
1123.0250	2mm x 50m	2/25" x 165'
1123.0350	3mm x 50m	1/8" x 165'
1123.0650	6mm x 50m	1/4" x 165'
1123.0950	9mm x 50m	3/8" x 165'
1123.1250	12mm x 50m	1/2" x 165'



Scan this QR code to learn more about this product on our website

130°C FLAT ORANGE FINE LINE PRECISION MASKING TAPE

[130°C/266°F Flat Orange Precision Masking Tape](#) is a medium tack masking tape for interior and exterior applications. It is an orange rice paper washi tape, with a custom formulated acrylic-based adhesive. This waterproof product is ideal for masking on painted surfaces, glass, plastics, trims, rubbers and wheels. It also offers clean, residue-free removal even when exposed to temperatures up to 130°C/266°F for up to 30 mins and can be exposed outside to UV for up to 14 days.

Other sizes available upon request.

Part No.	Metric	Imperial
1125.0150	1mm x 50m	1/25" X 165'
1125.01.550	1.5mm x 50m	1/16" x 165'
1125.0250	2mm x 50m	2/25" x 165'
1125.0350	3mm x 50m	1/8" x 165'
1125.0650	6mm x 50m	1/4" x 165'
1125.0950	9mm x 50m	3/8" x 165'
1125.1250	12mm x 50m	1/2" x 165'



160°C HIGH TEMPERATURE FINE LINE CREPE MASKING TAPE

[160°C/320°F High Temperature Fine Line Masking Tape](#) is a high temperature tape with excellent immediate adhesion. It is a high-quality crepe paper tape with a pressure-sensitive rubber-based adhesive. It will hold to and cleanly remove from a variety of surfaces including plastics, rubbers, trims and mouldings. Suitable for temperatures up to 160°C/320°F for up to 30 mins.

Part No.	Metric	Imperial
1185.0150	1mm x 50m	1/25" X 165'
1185.01.550	1.5mm x 50m	1/16" x 165'
1185.0250	2mm x 50m	2/25" x 165'
1185.0350	3mm x 50m	1/8" x 165'
1185.0650	6mm x 50m	1/4" x 165'
1185.0950	9mm x 50m	3/8" x 165'
1185.1250	12mm x 50m	1/2" x 165'



Scan this QR code to learn more about this product on our website



Scan this QR code to learn more about this product on our website

CUSTOMISING TAPE

[Customising Tape](#) has been created for striping with extra flexibility in mind, allowing the user to mask the tightest of contours. By stripping out sections, a variety of stripe widths and shapes can be created. Made from our most flexible fine line tape, the 8 x 1.5mm (8 x 1/16") strips allows creativity and parallel pinstriping around curves and bends.

Part No.	Metric	Imperial
1119.1210	12mm x 10m	1/2" x 33'

HOW TO

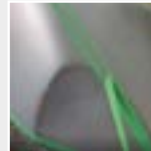
STEP 1

Mask the designated area where you want the pinstriping to appear.



STEP 2

Remove the sections of 1.5mm (1/16") material to create your custom sized pinstripes.



STEP 3

Paint desired colour and demask to reveal perfect pinstripes.



Scan this QR code to learn more about this product on our website

STRIPING TAPE

[Striping Tape](#) has been designed for easily painting long straight lines/stripes. It is ideal on cars, commercial vehicles, aeroplanes, boats etc. Its polypropylene, rigid construction, makes the job as simple as possible, with pre-cut lines to give a variety of stripe options and its non-bleed properties give a perfect finish. The 25mm tape is made up of a middle section of 12mm which includes 8 pull-out stripes of 1.5mm, providing a variety of stripes of different widths. Heat resistant to 120°C/248°F for up to 45 minutes. Saves time and improves accuracy during the pinstriping process.

Part No.	Metric	Imperial
1118.2514	25mm x 14m	1" x 45'



Scan this QR code to learn more about this product on our website

80°C PREMIUM MASKING TAPE

[80°C/176°F Premium Masking Tape](#) is suitable for automotive, marine, aerospace, decorative and industrial applications. The product is resistant to humidity, solvent and water-based paints and has excellent heat resistance up to 80°C/176°F. The tape has flexible conformability and tear resistance, it cuts easily and leaves no adhesive residue after baking.

Other sizes available upon request.

Part No.	Metric	Imperial
1180.1850	18mm x 50m	¾" x 165'
1180.2450	24mm x 50m	1" x 165'
1180.3650	36mm x 50m	1½" x 165'
1180.4850	48mm x 50m	2" x 165'



Scan this QR code to learn more about this product on our website

110°C HIGH PERFORMANCE MASKING TAPE

[110°C/230°F High Performance Masking Tape](#) is suitable for automotive, marine, aerospace, decorative and industrial applications even when used with low bake/infra-red drying processes. The product is resistant to humidity, solvent and water based paints and has excellent heat resistance up to 110°C/230°F. The tape has flexible conformability and resistance, it cuts easily and leaves no adhesive residue after the drying process.

Other sizes available upon request.

Part No.	Metric	Imperial
1181.1850	18mm x 50m	¾" x 165'
1181.2450	24mm x 50m	1" x 165'
1181.3650	36mm x 50m	1½" x 165'
1181.4850	48mm x 50m	2" x 165'



Scan this QR code to learn more about this product on our website

120°C LIME PRECISION MASKING TAPE

120°C Lime Precision Masking Tape is a high tack masking tape for interior and exterior applications. It's a translucent rice paper masking tape, with an acrylic adhesive for highly protective bonds on sensitive surfaces. Ideal for both solvent-based and water-based paint systems it can be used for masking on painted surfaces, glass, plastics, mouldings, trims, rubbers and wheels and can be removed with no adhesive residue.

120°C Lime Precision Masking Tape is heat-resistant to temperatures up to 120°C/248°F for up to 1 hour and can be exposed outside to UV for up to 7 days.

Part No.	Metric	Imperial
1123.1850	18mm x 50m	¾" x 165'
1123.2450	24mm x 50m	1" x 165'
1123.3650	36mm x 50m	1½" x 165'
1123.4850	48mm x 50m	2" x 165'



Scan this QR code to learn more about this product on our website

130°C FLAT ORANGE PRECISION MASKING TAPE

[130°C/266°F Flat Orange Precision Masking Tape](#) is a medium tack masking tape for interior and exterior applications. It is an orange rice paper washi tape, with a custom formulated acrylic-based adhesive. This waterproof product is ideal for masking on painted surfaces, glass, plastics, trims, rubbers and wheels. It also offers clean, residue-free removal even when exposed to temperatures up to 130°C/266°F for up to 30 mins and can be exposed outside to UV for up to 14 days.

Other sizes available upon request.

Part No.	Metric	Imperial
1125.1850	18mm x 50m	¾" x 165'
1125.2450	24mm x 50m	1" x 165'
1125.3650	36mm x 50m	1 ½" x 165'
1125.4850	48mm x 50m	2" x 165'



Scan this QR code to learn more about this product on our website

160°C HIGH TEMPERATURE CREPE MASKING TAPE

[160°C/320°F High Temperature Crepe Masking Tape](#) is a high-quality, high temperature crepe paper masking tape with excellent instant adhesion. Featuring a pressure-sensitive rubber-based adhesive that will hold to a variety of surfaces including metal, plastics, rubbers, trims and mouldings. It offers clean, residue-free removal even when exposed to temperatures up to 160°C/320°F for up to 30 mins, and performs well in wet strip applications, providing excellent resistance to paint-flaking.

Other sizes available upon request.

Part No.	Metric	Imperial
1185.1850	18mm x 50m	¾" x 165'
1185.2450	24mm x 50m	1" x 165'
1185.3650	36mm x 50m	1 ½" x 165'
1185.4850	48mm x 50m	2" x 165'



Scan this QR code to learn more about this product on our website

PAINT CONTROL TAPE

[Paint Control Tape](#) is a chequered tape that gives the paint sprayer the ability to monitor the optimum opacity of paint applied by viewing the paint coverage over the black and white squares.

Part No.	Metric	Imperial
1190.2430	24mm x 30m	1" x 98'



WHEEL REPAIR MASK

[Wheel Repair Mask](#) is the most effective way to mask a tyre when spraying an alloy wheel. It saves considerable time and materials over traditional masking methods and is a SEMA Global Award winner.

Part No.	Metric	Imperial
1095.1417	170cm x 170cm x 20	67" x 67" x 20



Scan this QR code to learn more about this product on our website



BREATHABLE MASKING FILM

[Breathable Masking Film](#) is moisture absorbent, allowing body shops to mask damp cars while reducing ghost marking after bake. 17 microns thick. HDPE (high-density polyethylene) films are more tear-resistant and have better puncture resistance.

This product is Corona treated and can hold paint/mist overspray to prevent paint contamination, keeping the job as neat as possible.



Scan this QR code to learn more about this product on our website

Part No.	Metric	Imperial
1080.4015	4m x 150m	13ft x 495'
1080.5012	5m x 120m	16ft x 396'



PREMIUM CLEAR MASKING FILM

[Premium Clear Masking Film](#) is the essential product for quickly covering all areas which are not involved in the spraying process. HDPE (high-density polyethylene) films are more tear-resistant and have better puncture resistance.

This product is Corona treated and can hold paint/mist overspray to prevent paint contamination, keeping the job as neat as possible.



Scan this QR code to learn more about this product on our website

Part No.	Metric	Imperial
1090.4015	4m x 150m	13ft x 495'
1090.5012	5m x 120m	16ft x 396'
1090.6010	6m x 100m	20ft x 330'



PRE-FOLDED CLEAR MASKING FILM

[Pre-Folded Clear Masking Film](#) is the essential product for quickly covering all areas which are not involved in the spraying process. HDPE (high-density polyethylene) films are more tear-resistant and have better puncture resistance.

This product is Corona treated and can hold paint/mist overspray to prevent paint contamination, keeping the job as neat as possible.



Scan this QR code to learn more about this product on our website

Part No.	Metric	Imperial
1090.0550	0.5m x 50m	20" x 165'
1090.1050	1.0m x 50m	40" x 165'



NON-SLIP SURFACE PROTECTION FILM

[Non-Slip Surface Protection Film](#) is a quick and efficient protector of surfaces in the mixing room, spray booth floors, stainless steel tabletops and paint mixing areas. It is easy to apply and remove and saves time when covering large areas.



Scan this QR code to learn more about this product on our website

Part No.	Metric	Imperial
2214.6025	600mm x 25m	24" x 81'
2214.1225	1200mm x 25m	48" x 81'
2214.1250	1200mm x 50m	48" x 165'



SEAL WRAP

[Seal Wrap](#) protects broken windows from the elements and prevents the glass from shattering further until ready for repair. The film is a clear, tough, low tack masking material, for both interior and exterior applications.

Other sizes available upon request.



Scan this QR code to learn more about this product on our website

Part No.	Metric	Imperial
1060.0650	60mm x 50m	2 1/2" x 165'
1060.07550	75mm x 50m	3" x 165'
1060.3050	300mm x 50m	12" x 165'
1060.6050	600mm x 50m	24" x 165'
1060.9050	900mm x 50m	36" x 165'



Scan this QR code to learn more about this product on our website

PREMIUM CLOTH PROTECTION TAPES

[Premium Cloth Protection Tapes](#) are constructed from a polyethylene cloth laminate with 78 weaves per inch, twice as many as standard cloth gaffer tape; this gives the tape considerable strength and allows the tape to be torn in both directions, giving the user a lot more flexibility. Premium Cloth Protection Tapes are waterproof, with a high-tack adhesive, but after use can be removed easily leaving no adhesive residue. As a premium duct-tape its uses are many; within the automotive, marine, industrial, construction and DIY sectors.

Available in: White, Black, Silver, Red and Blue. Other sizes available upon request.

Part No.	Colour	Metric	Imperial
2200.5050	White	50mm x 50m	2" x 165'
2201.5050	Red	50mm x 50m	2" x 165'
2202.5050	Silver	50mm x 50m	2" x 165'
2203.5050	Black	50mm x 50m	2" x 165'
2208.5050	Blue	50mm x 50m	2" x 165'



Scan this QR code to learn more about this product on our website

GENERAL PURPOSE CLOTH PROTECTION TAPE

[General Purpose Cloth Protection Tape](#) is a great addition to any toolbox for most general applications from light duty sealing, bundling, marking and temporary repairs on non-critical applications. Made of a synthetic rubber adhesive which allows it to adhere to a variety of surfaces including metal, glass, wood and plastics.

This general purpose, polyethylene backed duct-tape ensures moisture resistance for reliable performance in moist or humid environments. Duct tapes offer a high level of adhesion and are great for use where longer-term fixes are required, with easy to tear properties.

Other sizes available upon request.

Part No.	Metric	Imperial
2209.5050	50mm x 50m	2" x 165'



Scan this QR code to learn more about this product on our website

ALUMINIUM TAPE

[JTAPE Aluminium Tape](#) will not decrease in size with advanced age. The ideal combination of the aluminium backing and synthetic rubber adhesive which is optimized for the demands of bonding insulating material, guarantees the best adhesion and highest security for critical conditions. Aluminium Tape is resistant against heat, cold, and humidity -35°C/-31°F + 120°C/248°F. For bonding of aluminium laminated mineral fibre insulation, pipes, and air ducts, for isolating against heat and cold, and for the sealing of containers and pipes. Aluminium Tape protects and repairs.

Part No.	Metric	Imperial
2107.4845	48mm x 45m	2" x 165'



220°C GREEN HIGH TEMPERATURE POLYESTER FILM TAPE

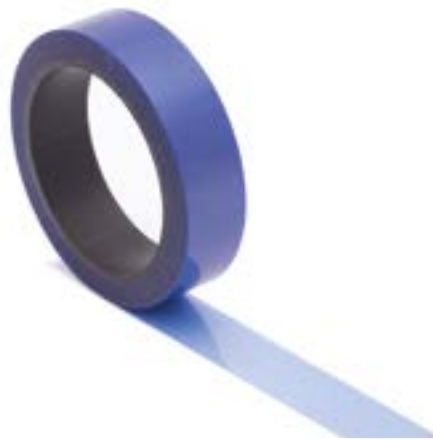
[220°C/428°F High Temperature Polyester Film Tape](#) is a reliable and versatile product for powder coating and painting. It is available in two colours and is used to mask and protect various surfaces during the coating, painting and baking process. Temperature resistant up to 220°C/428°F.

Other sizes available upon request.

Part No.	Metric	Imperial
4005.0366	3mm x 66m	1/8" x 216'
4005.0666	6mm x 66m	1/4" x 216'
4005.0966	9mm x 66m	3/8" x 216'
4005.1266	12mm x 66m	1/2" x 216'
4005.1966	19mm x 66m	3/4" x 216'
4005.2566	25mm x 66m	1" x 216'
4005.5066	50mm x 66m	2" x 216'
4005.7566	75mm x 66m	3" x 216'
4005.8866	88mm x 66m	3 1/2" x 216'
4005.10066	100mm x 66m	4" x 216'



Scan this QR code to learn more about this product on our website



220°C BLUE HIGH TEMPERATURE POLYESTER FILM TAPE

[220°C/428°F Blue High Temperature Polyester Film Tape](#) is a reliable and versatile product for powder coating and painting.

Thinner and more flexible than our Green 4005 product, the tape has excellent temperature resistance up to 220°C/428°F and is used to mask and protect various surfaces during the coating, painting and baking process.

Other sizes available upon request.

Part No.	Metric	Imperial
4006.0366	3mm x 66m	1/8" x 216'
4006.0666	6mm x 66m	1/4" x 216'
4006.0966	9mm x 66m	3/8" x 216'
4006.1266	12mm x 66m	1/2" x 216'
4006.1966	19mm x 66m	3/4" x 216'
4006.2566	25mm x 66m	1" x 216'
4006.5066	50mm x 66m	2" x 216'
4006.7566	75mm x 66m	3" x 216'
4006.8866	88mm x 66m	3 1/2" x 216'
4006.10066	100mm x 66m	4" x 216'



Scan this QR code to learn more about this product on our website



HIGH TEMPERATURE CREPE MASKING DISCS

[High Temperature Crepe Masking Discs](#) are resistant to temperatures up to 160°C. They are specifically designed to cover the rear hub of alloy wheels and to provide a reliable solution while coating, baking and treating wheels during the refurbishment process.

Other sizes available upon request.

Part No.	Metric	Imperial
4003.145.250	145mm x 250 discs	5.7" x 250 discs
4003.150.250	150mm x 250 discs	5.9" x 250 discs
4003.155.250	155mm x 250 discs	6.1" x 250 discs
4003.160.250	160mm x 250 discs	6.3" x 250 discs
4003.165.250	165mm x 250 discs	6.49" x 250 discs
4003.170.250	170mm x 250 discs	6.7" x 250 discs
4003.180.250	180mm x 250 discs	7.1" x 250 discs
4003.200.250	200mm x 250 discs	7.9" x 250 discs



Scan this QR code to learn more about this product on our website



GREEN HIGH TEMPERATURE POLYESTER FILM DISCS

[Green High Temperature Polyester Film Discs](#) are resistant to temperatures up to 220°C.

They are specifically designed to cover the rear hub of alloy wheels and to provide a reliable solution while coating, baking and treating wheels during the refurbishment process.

Other sizes available upon request.

Part No.	Metric	Imperial
4009.145.250	145mm x 250 discs	5.7" x 250 discs
4009.150.250	150mm x 250 discs	5.9" x 250 discs
4009.155.250	155mm x 250 discs	6.1" x 250 discs
4009.160.250	160mm x 250 discs	6.3" x 250 discs
4009.165.250	165mm x 250 discs	6.49" x 250 discs
4009.170.250	170mm x 250 discs	6.7" x 250 discs
4009.180.250	180mm x 250 discs	7.1" x 250 discs
4009.200.250	200mm x 250 discs	7.9" x 250 discs



Scan this QR code to learn more about this product on our website



PARKING SENSOR MASKING DISCS

[Parking Sensor Masking Discs](#) are the ideal solution for the protection of parking sensors and rubber seals during the repair process. Our adhesive cover protects the sensor throughout the repair process, preventing damage from sanding, painting and polishing.

Part No.	Metric	Imperial
4002.6017	18mm diameter x 60 discs	¾" diameter x 60 discs



Scan this QR code to learn more about this product on our website



Scan this QR code to learn more about this product on our website

CLEAR LOGO TAPE

[Clear Logo Tape](#) is a double sided permanent carrier-free transfer adhesive designed specifically for re-fixing logos/decals/badges from all types of vehicles.

Part No.	Metric	Imperial
2210.5030	50mm x 300mm x10 sheets	2" x 12" x10 sheets



Scan this QR code to learn more about this product on our website

GREY DOUBLE SIDED ACRYLIC TAPE

[Grey Double Sided Acrylic Tape](#) is a reinforced acrylic 1.1mm or 0.8 mm closed-cell foam tape with a high-tack and utilises a high strength performance acrylic adhesive. The closed-cell foam construction makes the tape ideal for both internal and external fixings in all weather conditions. Grey Double Sided Acrylic Tape has excellent adhesion to a wide range of substrates including plastics & metals and is ideal for bonding emblems, nameplates, plastic panels and metals; it is available in widths from 6mm to 25mm.

Available in 10m and 20m lengths (other widths available upon request).

Part No.	Thickness	Metric	Imperial
2110.0610	1.1mm	6mm x 10m	¼" x 33'
2110.0910	1.1mm	9mm x 10m	⅜" x 33'
2110.1210	1.1mm	12mm x 10m	½" x 33'
2110.1910	1.1mm	19mm x 10m	¾" x 33'
2110.2510	1.1mm	25mm x 10m	1" x 33'
2111.0605	0.8mm	6mm x 5m	¼" x 16'



Scan this QR code to learn more about this product on our website

HIGH STRENGTH ACRYLIC TAPE

[High Strength Clear Acrylic Tape](#) is a reinforced 0.5mm thick double-sided acrylic tape with very high-tack and maximum strength performance acrylic adhesive. High Strength Clear Acrylic Tape has an excellent resistance to solvents, chemicals, UV and heat; enabling the tape to bond permanently to a very wide range of substrates. This clear tape's high-strength adhesive makes it ideal for bonding emblems, nameplates and metal; available in widths from 6mm to 25mm.

Other sizes available upon request.

Part No.	Metric	Imperial
2108.0610	6mm x 10m	¼" x 33'
2108.0910	9mm x 10m	⅜" x 33'
2108.1210	12mm x 10m	½" x 33'
2108.1910	19mm x 10m	¾" x 33'
2108.2510	25mm x 10m	1" x 33'



Scan this QR code to learn more about this product on our website

DOUBLE SIDED MOUNTING TAPE

[Double Sided Mounting Tape](#) has a standard high tack adhesive with excellent ageing and weather-resistant properties, ideal for fixing decals, mouldings, mirror fixings and number plates.

Other sizes available upon request.

Part No.	Metric	Imperial
2106.0610	6mm x 10m	1/4" x 33'
2106.0910	9mm x 10m	3/8" x 33'
2106.1210	12mm x 10m	1/2" x 33'
2106.1910	19mm x 10m	3/4" x 33'
2106.2510	25mm x 10m	1" x 33'
2106.5010	50mm x 10m	2" x 33'
2106.5005	50mm x 5m	2" x 16'



Scan this QR code to learn more about this product on our website

REFIT TAPE

[Refit Tape](#) is a double sided permanent carrier-free transfer adhesive with an instant, high strength bond, even on difficult to stick surfaces.

Part No.	Metric	Imperial	Units
2207.1210	12mm x 10m	1/2" x 33'	1 roll
2207.1210.2	12mm x 10m	1/2" x 33'	2 rolls
2207.2510	25mm x 10m	1" x 33'	1 roll



Scan this QR code to learn more about this product on our website

NUMBER PLATE PADS

[Number Plate Pads](#) are easy to apply and fix a number plate to a vehicle. These black double-sided heavy-duty pads come in three pack sizes.

Other sizes available upon request.

Part No.	Units
4000.8525	3 per pack
4000.8525.6	6 per pack
4000.8525.1000	1000 per roll



Scan this QR code to learn more about this product on our website

SEAM SEALING TAPE

[Seam Sealing Tape](#) has a flat profile and is used to replace or repair the seams on automotive door skins, flanges, tail gates, bonnets and general clinched areas. It has excellent resistance to solvents, chemicals, UV and heat, making the tape bond securely to a wide range of substrates. Once applied, the acrylic adhesive provides a permanent waterproof bond and seal and is ready for painting.

Other sizes available upon request.

Part No.	Metric	Imperial
2205.0910	9mm x 10m	3/8" x 33'
2205.1210	12mm x 10m	1/2" x 33'
2205.2210	22mm x 10m	7/8" x 33'



Scan this QR code to learn more about this product on our website

DOOR SKIN REPLACEMENT FOAM

[Door Skin Replacement Foam](#) is a foam backed foil to easily replace the inner door membrane during repairs. Door Skin Replacement Foam has a grid-pattern printed on the release liner to aid cutting out intricate shapes.

Part No.	Metric	Imperial
2204.6010	600mm x 10m	24" x 33'



Scan this QR code to learn more about this product on our website

DOOR SKIN REPLACEMENT FILM

[Door Skin Replacement Film](#) is a polyethylene based clear film for making door interiors watertight. Ideal when used with JTAPE Refit Tape to adhere the film to the interior.

Part No.	Metric	Imperial
2206.6050	600mm x 50m	24" x 165'



Scan this QR code to learn more about this product on our website

CLOTH HAZARD TAPE

[Cloth Hazard Marking Tape](#) is a PE laminated synthetic cloth duct tape, which is capable of withstanding harsh weather environments, although long term UV exposure is not recommended for a clean removal.

The strong durable striped adhesive tape can be used for marking equipment, flooring or marking safety areas. It is suitable for both internal and external use.

It has a high abrasion resistance and is ideal for marking safety areas.

Part No.	Colour	Metric	Imperial
1126.4833	Yellow/Black	48mm x 33m	2" x 108'
1127.4833	Red/White	48mm x 33m	2" x 108'



Scan this QR code to learn more about this product on our website

FLOOR MARKING TAPE

[Floor Marking Tape](#) is for marking floors and dangerous areas.

The strong durable striped adhesive tape can be used for marking equipment, flooring or marking safety areas. It is suitable for both internal and external use.

The self-adhesive warning tape features bright noticeable colours and is made from PVC.

Part No.	Colour	Metric	Imperial
1128.4833	Yellow/Black	48mm x 33m	2" x 108'
1129.4833	Red/White	48mm x 33m	2" x 108'



Scan this QR code to learn more about this product on our website

BRAIDED WINDSCREEN REMOVAL WIRE

[Braided Windscreen Removal Wire](#) is designed for windscreen removal. It has been manufactured to the highest quality and specially designed to cut through urethane bonding. It is composed of three super strong brass plated steel wires braided together to form one wire.

Part No.	Metric	Imperial
2211.0422	0.7mm x 22.5m	1/33" x 75'



GRANDE KIT Part No. 5100.0037

Part No.	Products
1011.2050	Advanced Foam Masking Tape
1012.2025	No Edge Blending Tape Plus
1018.1525	Flexi No Edge Blending Tape
1055.5010	Perforated Trim Masking Tape
1111.0655	Orange Fine Line Masking Tape 6mm x 55m
2110.1210	Grey Double Sided Acrylic Tape 12mm x 10m
2210.5030	Clear Logo Tape 2 sheets



ESSENTIALS KIT Part No. 5100.0041

Part No.	Products
1013.1350	Smooth Edge Foam Masking Tape
1055.5010	Perforated Trim Masking Tape
1111.0655	Orange Fine Line Masking Tape 6mm x 55m
2110.1210	Grey Double Sided Acrylic Tape 12mm x 10m
4002.2017	Parking Sensor Masking Discs 1 sheet (20 discs)



BEANIE BUNDLE KIT Part No. 5100.0039

Part No.	Products
1012.2025	No Edge Blending Tape Plus
1018.1525	Flexi No Edge Blending Tape
1055.5010	Perforated Trim Masking Tape
2110.1210	Grey Double Sided Acrylic Tape 12mm x 10m
4002.2017	Parking Sensor Masking Discs 1 sheet (20 discs)
	JTAPE Beanie Hat



POLO BUNDLE KIT Part No. 5100.0010

Part No.	Products
1011.2050	Advanced Foam Masking Tape
1012.2025	No Edge Blending Tape Plus
1055.5010	Perforated Trim Masking Tape
1111.0655	Orange Fine Line Masking Tape 6mm x 55m
	JTAPE Polo Shirt

10_2023
ITEM: 9000.0001

JTAPETM

#TAPESMART

jtape_official



@jtapedtd



**MADE IN
BRITAIN**[®]

For more information call +44 (0)1625 618 185 or Email info@jtape.com

JTAPE Limited, Hulley Road, Macclesfield, Cheshire, United Kingdom SK10 2SF