

FLOOR MARKING TAPE

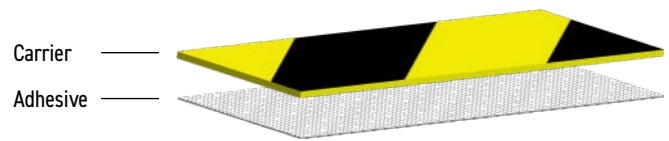
TECHNICAL DATA SHEET **1128**

V1.1 [02/25]

PRODUCT DESCRIPTION

JTAPE Black and Yellow Vinyl Floor Marking Tape is a PVC-based tape offering excellent waterproof and oil-resistant properties. Used to identify hazardous and safe areas. Provides excellent adhesion to both smooth and rough surfaces, good abrasion resistance and conformability in addition to being waterproof and oil resistant. Various widths available on request.

PRODUCT CONSTRUCTION



SHELF LIFE

12 months from date of receipt by customer when stored at 20°C ±5°C (68°F ±9°F) and 60% relative humidity.

PHYSICAL PROPERTIES

Values shown are typical values and should not be used for specification purposes.

Carrier	PVC
Adhesive	Rubber-based, pressure sensitive
Colour	Black and Yellow
Thickness	150µm / 0.15mm (±10%)
Width	48mm (±5%) other widths available on request.
Length	33m (±2%).

PERFORMANCE PROPERTIES

Values shown are typical values and should not be used for specification purposes.

Peel Adhesion	1.5N/25mm	[ASTM-D1000]
Tensile Strength	9.2N/cm	
Application Temperature	15°C to 25°C (59°F to 77°F)	
Temperature Resistance	40°C (104°F) Long-Term / 80°C (176°F) Short-Term - 1 hour	

Tel: +44 (0)1625 618185 | www.jtape.com | info@jtape.com

Designed & Manufactured in the UK: Hulley Road, Macclesfield, Cheshire, SK10 2SF.

#TAPESMART

Important Notice to Purchaser: JTAPE MAKES NO WARRANTIES, EXPRESS OR IMPLIED, INCLUDING, BUT NOT LIMITED TO, ANY IMPLIED WARRANTY OF MERCHANTABILITY OR FITNESS FOR A PARTICULAR PURPOSE. User is responsible for determining whether the JTAPE product is fit for a particular purpose and suitable for user's application. Please remember that many factors can affect the use and performance of a JTAPE Automotive product in a particular application. The materials to be bonded to the product, the conditions in which the product is used, and the time and environmental conditions, in which the product is expected to perform are among the many factors that can affect the use and performance of a JTAPE Automotive product, some of which are uniquely within the user's knowledge and control. It is essential that the user evaluate the JTAPE Automotive product to determine whether it is fit for a particular purpose and suitable for user's methods of application. Limitation of Remedies and Liability: If the JTAPE product is proved to be defective, THE EXCLUSIVE REMEDY, AT JTAPE'S OPTION, SHALL BE TO REFUND THE PURCHASE PRICE OF OR TO REPAIR OR REPLACE THE DEFECTIVE JTAPE PRODUCT. JTAPE shall not otherwise be liable for loss or damages, whether direct, indirect special, incidental, or consequential, regardless of the legal theory asserted, including negligence, warranty, or strict liability.